

# IS IT A NURDLE?

**YES**

These are nurdles, or pre-production plastic pellets, used by manufacturers to create new plastic products. Please count these for the hunt



**KEY FEATURES OF A NURDLE:**

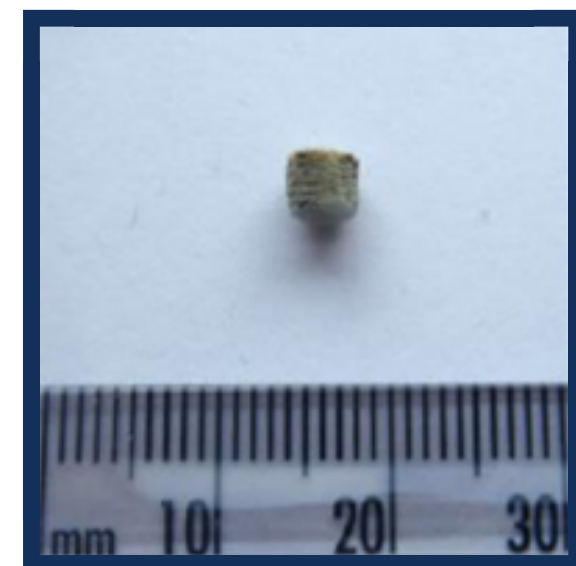
- 2-5mm in size
- Rigid plastic
- lentil or disk shaped
- Clear or opaque
- Various colours



**NO**

These look similar but are not nurdles! Please don't count them for the hunt

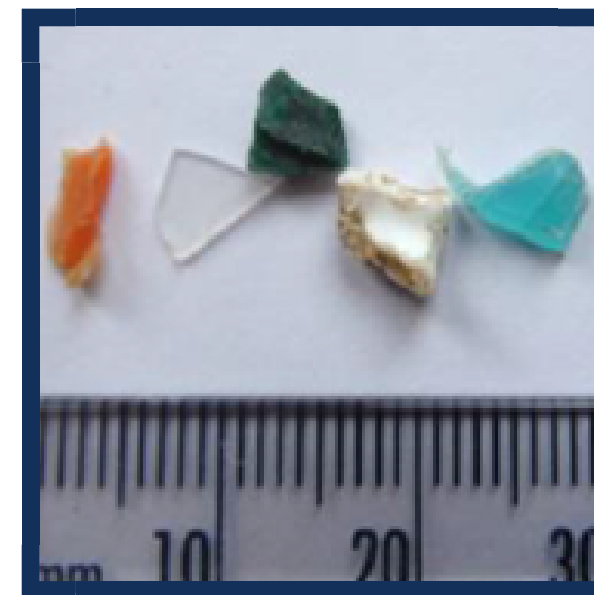
**BIOBEADS**



Biobeads are pellets used to help purify water. These are made of plastic but have a wrinkled or ridged surface and tend to have irregular shapes. Please let us know if you spot these!

- BIOBEADS**
- Often black or grey
  - Can be green, blue or beige.
  - Wrinkled, ridged or bumpy

**SECONDARY MICROPLASTICS**



- Angular fragments
- Irregular shapes

**BB GUN PELLETS**



- Spherical
- Brightly coloured

**EXPANDED POLYSTYRENE**



- Spherical
- White
- Squishy

**CRINOID FOSSILS**



- Variable in size
- Deep ridges
- Not plastic

**HORSESHOE CRAB EGGS**



- Dark green
- Usually in clusters
- Not plastic



## NURDLE IDENTIFICATION CHART

RECORD THE NUMBER OF NURDLES YOU COUNT ON THE OTHERSIDE OF THIS SHEET



**NAME:** \_\_\_\_\_

**DATE:** \_\_\_\_\_

**LOCATION:** \_\_\_\_\_

**NUMBER OF  
NURDLE HUNTERS:** \_\_\_\_\_

**START TIME:** \_\_\_\_\_

**FINISH TIME:** \_\_\_\_\_

**TOTAL TIME SPENT HUNTING (MINS):** \_\_\_\_\_

**NUMBER OF NURDLES FOUND (TALLY):**

**TOTAL NUMBER OF NURDLES FOUND:** \_\_\_\_\_

**NOTES (WEATHER, BEACH LENGTH, BEACH TYPE, ROCKY, SANDY):**

## COLLECTING NURDLES



You don't have to collect the nurdles you find. For us, the most important information is the number of nurdles you think are present on the beach during your nurdle hunt!

But if you do want to collect them (which is sometimes helpful for counting) an old jam jar is ideal for storing nurdles. Please always wear gloves as nurdles can adsorb toxic pollutants and bacteria to their surfaces from the ocean. So be sure to also wash your hands with soap and water thoroughly after touching any beach debris. A pair of tweezers or a handy sieve also helps to separate the nurdles from the sand.

Unfortunately nurdles can't be recycled so if you do collect them, and don't want to keep them, please dispose of them safely in a bin. Try filling a plastic bottle with them as they are less likely to break than a bag, and therefore less likely to spill into the environment on the way to landfill. Not ideal, we know, but that's why we want to stop them entering our oceans in the first place.



# NURDLE HUNT RECORDING FORM

SUBMIT YOUR DATA AT: [WWW.NURDLEHUNT.ORG.UK](http://WWW.NURDLEHUNT.ORG.UK)

